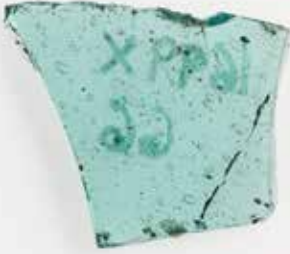


Table 1 - Glass sherds

Vessel glass from Strøby Toftegård



KØM 01699x66

Corpus sherd

Light bluish-green, transparent, square corpus sherd with a thin applied thread.

Height: 11.1 mm, width: 9.9 mm, thickness: 0.6 mm.

Found when sieving plough soil (soil-sieving trench 2652).



KØM 01699x70

Rim sherd

Faintly bluish-green, transparent, almost triangular rim sherd with much-thickened, slightly everted, rounded rim.

Height: 9.4 mm, width: 10.5 mm, thickness: 0.6 mm and 30 mm at the rim. Original diameter of the glass: c. 8 cm.

Found when sieving plough soil (soil-sieving trench 2751).



KØM 01699x74

Corpus sherd

Faintly bluish-green, transparent, triangular corpus sherd.

Height: 12.7 mm, width: 10.1 mm, thickness: 0.8 mm.

Found when sieving plough soil (soil-sieving trench 2251).



KØM 01699x75

Corpus sherd

Brown, transparent, triangular, corpus sherd with five fused-in, white threads.

Height: 8.8 mm, width: 15.8 mm, thickness: 0.8 mm.

Found when sieving plough soil (soil-sieving trench 2251).



KØM 01699x78

Corpus sherd

Light bluish-green, transparent, triangular corpus sherd with a thin, applied thread.

Height: 11.2 mm, width: 6.2 mm, thickness: 0.8 mm.

Found when sieving plough soil (soil-sieving trench 2852).



KØM 01699x106

Corpus sherd

Bluish-green, transparent, pentagonal corpus sherd with little blisters.

Height: 7.5 mm, width: 7.6 mm, thickness: 0.5 mm.

Found when sieving plough soil (soil-sieving trench 2452).



KØM 01699x108

Corpus sherd

Light-blue, transparent, square corpus sherd with three applied threads.

Height: 7.2 mm, width: 9.7 mm, thickness: 0.8 mm.

No information about find spot.



KØM 01699x117

Corpus sherd

Faintly greenish, transparent, curved crescent-shaped, Corpus sherd.

Height: 11.2 mm, width: 7.3 mm, thickness: 0.4 mm.

Found when sieving plough soil (soil-sieving trench 2353).



KØM 01699x119

Corpus sherd

Light-green, transparent, triangular corpus sherd with eight, applied white, thin threads.

Height: 15.6 mm, width: 8.0 mm, thickness: 1.4 mm.

Found when sieving plough soil (soil-sieving trench 2153).

Table 1 - Glass sherds
Vessel glass from Strøby Tøftegård



KØM 01699x125

Corpus sherd

Light bluish-green, transparent, square corpus sherd with some blisters and three applied threads of the same colour as the glass, on top of which there are thin reddish-brown threads fused into the glass. Two of the applied threads are very thin, while one is a little thicker.

Height: 22.4 mm, width: 14.4 mm, thickness: 0.5 mm. Found when sieving a pit, A10004.



KØM 01699x126

Corpus sherd

Light bluish-green, transparent, pentagonal corpus sherd with a few little blisters and thin, applied thread. Height: 1.0 mm, width: 11.5 mm, thickness: 0.6 mm. Found when sieving a pit, A10004.



KØM 01699x129

Corpus sherd

Faintly bluish-green, transparent, pentagonal corpus sherd with little blisters and thick, applied thread with a diameter of 2.2 mm.

Height: 8.4 mm, width: 7.3 mm, thickness: 0.6 mm. Found when sieving plough soil (soil-sieving trench 2953).



KØM 01699x133

Rim sherd

Bluish-green, transparent, almost triangular, crackled rim sherd with everted and slightly thickened rim.

Height: 11.4 mm, width: 11.0 mm, thickness: 2.3 mm and 2.9 mm at the rim. Original diameter of the glass: c. 10 cm. Found when sieving plough soil (soil-sieving trench 2053).



KØM 01699x153

Rim sherd

Clear, transparent, almost triangular rim sherd, with rounded, slightly thickened rim.

Height: 6.5 mm, width: 8.8 mm, thickness: 1.6 mm and 2.2 mm at the rim. Original diameter of the glass: c. 8 cm. Found when sieving plough soil (soil-sieving trench 2054).



KØM 01699x155

Corpus sherd

Bluish-green, transparent, triangular corpus sherd with blisters.

Height: 6.2 mm, width: 4.5 mm, thickness: 0.4 mm. Found when sieving a pit, A10004.



KØM 01699x156

Corpus sherd

Clear, transparent, pentagonal corpus sherd with little blisters.

Height: 12.4 mm, width: 9.4 mm, thickness: 0.4 mm. Found when sieving a pit, A10004.



KØM 01699x157

Corpus sherd

Light bluish-green, transparent, almost triangular corpus sherd.

Height: 6.4 mm, width: 41 mm, thickness: 0.4 mm. Found when sieving plough soil (soil-sieving trench 2855).



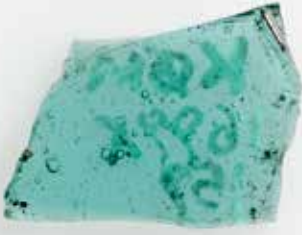
KØM 01699x158

Corpus sherd

Yellow/olive-coloured, transparent, almost pentagonal corpus sherd.

Height: 7.2 mm, width: 5.7 mm, thickness: 0.4 mm. Found when sieving plough soil (soil-sieving trench 2955).

Table 1 - Glass sherds
Vessel glass from Strøby Tøftegård



KØM 01699x159

Corpus sherd

Light bluish-green, transparent, square corpus sherd with a few little blisters.

Height: 7.9 mm, width: 6.1 mm, thickness: 0.7 mm.

Found when sieving plough soil (soil-sieving trench 2155).



KØM 01699x160

Corpus sherd

Bluish-green, transparent, square corpus sherd with little blisters.

Height: 6.2 mm, width: 6.1 mm, thickness: 0.7 mm.

Found when sieving plough soil (soil-sieving trench 2155).



KØM 01699x164

Corpus sherd

Olive-green/brown, transparent, triangular corpus sherd.

Height: 9.0 mm, width: 6.9 mm, thickness: 0.5 mm.

Found when sieving plough soil (soil-sieving trench 2455).



KØM 01699x166

Corpus sherd

Blue, transparent, square corpus sherd.

Height: 6.6 mm, width: 5.6 mm, thickness: 1.1 mm.

Found when sieving plough soil (soil-sieving trench 2955).



KØM 01699x184

Corpus sherd

Faintly bluish-green, transparent, pentagonal corpus sherd with little blisters.

Height: 10.8 mm, width: 7.0 mm, thickness: 0.5 mm.

Found when sieving plough soil (soil-sieving trench 2957).



KØM 01699x190

Corpus sherd

Olive-green/brown, transparent, pentagonal corpus sherd.

Height: 12.6 mm, width: 10.3 mm, thickness: 0.5 mm.

Found when sieving plough soil (soil-sieving trench 2056).



KØM 01699x191

Corpus sherd

Bluish-green, transparent, square corpus sherd with little blisters and a thin applied thread of the same colour as the glass.

Height: 8.9 mm, width: 6.9 mm, thickness: 0.5 mm.

Found when sieving plough soil (soil-sieving trench 2057).



KØM 01699x192

Corpus sherd

Bluish-green, transparent, pentagonal corpus sherd with blisters.

Height: 20.6 mm, width: 7.5 mm, thickness: 0.9 mm.

Found when sieving plough soil (soil-sieving trench 2057).



KØM 01699x194

Corpus sherd

Bluish-green, transparent, almost pentagonal corpus sherd, with blisters and with applied thread of the same colour as the glass. The thread thickens at the sides and is 6.0 mm at one end, 3.5 mm at the other.

Height: 19.4 mm, width: 11.7 mm, thickness: 1.7 mm. Presumably from a claw beaker.

Found when sieving plough soil (soil-sieving trench 2057).

Table 1 - Glass sherds
Vessel glass from Strøby Tøftegård



KØM 01699x195

Corpus sherd

Olive-green/brown, transparent, square corpus sherd. Height: 9.6 mm, width: 9.2 mm, thickness: 0.4 mm. Found when sieving plough soil (soil-sieving trench 2057).



KØM 01699x207

Corpus sherd

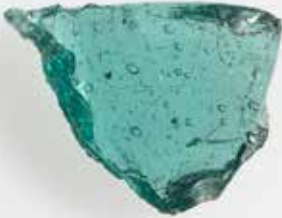
Light bluish-green, triangular corpus sherd with little blisters. Height: 5.5 mm, width: 5.5 mm, thickness: 0.3 mm. Found when sieving plough soil (soil-sieving trench 2858).



KØM 01699x210

Corpus sherd

Olive-green/brown, transparent, almost pentagonal corpus sherd with a few little blisters. Height: 13.6 mm, width: 10.8 mm, thickness: 0.3 mm. Found when sieving plough soil (soil-sieving trench 2758).



KØM 01699x211

Corpus sherd

Bluish-green, transparent, almost rounded triangular corpus sherd with little blisters. Height: 8.7 mm, width: 6.4 mm, thickness: 1.2 mm. Found when sieving plough soil (soil-sieving trench 2150).



KØM 01699x212

Corpus sherd

Light yellowish-green, transparent, triangular corpus sherd. Height: 8.0 mm, width: 5.2 mm, thickness: 1.3 mm. Found when sieving plough soil (soil-sieving trench 2150).



KØM 01699x213

Corpus sherd

Olive-green/brown, transparent, pentagonal corpus sherd. Height: 13.2 mm, width: 6.5 mm, thickness: 0.8 mm. Found when sieving plough soil (soil-sieving trench 1958).



KØM 01699x230

Corpus sherd

Faded green, transparent, pentagonal corpus sherd with little blisters. Height: 13.9 mm, width: 9.7 mm, thickness: 1.0 mm. Found when sieving plough soil (soil-sieving trench 2750).



KØM 01699x231

Corpus sherd with filigree thread

Olive-green/brown, translucent, pentagonal corpus sherd with applied 2.5 mm filigree thread of whitish-yellow and brown glass. The filigree thread has clearly been applied at too high a temperature, so the whitish-yellow encircling threads have fused with the side sherd. Height: 9.6 mm, width: 10.5 mm, thickness: 1.4 mm. Found when sieving plough soil (soil-sieving trench 2550).



KØM 01699x234

Corpus sherd

Bluish-green transparent, almost triangular corpus sherd with little blisters and a thin applied thread of the same colour as the glass. Height: 11.6 mm, width: 8.4 mm, thickness: 1.0 mm. Found when sieving plough soil (soil-sieving trench 2050).

Table 1 - Glass sherds
Vessel glass from Strøby Tøftegård



KØM 01699x235

Corpus sherd

Light-green, transparent, triangular corpus sherd with oval and round blisters and two fused-in, yellowish-white threads.

Height: 11.1 mm, width: 6.8 mm, thickness: 0.7 mm. Found when sieving plough soil (soil-sieving trench 2250).



KØM 01699x236

Rim sherd

Clear, transparent, pentagonal rim sherd with little blisters.

The rim sherd is slightly everted, with a much-thickened, hollow, round, folded rim, and with an approximately equal rounded profile on both sides of the fragment. The glass presumably stems from a palm cup.

Height 14.0 mm, width 21.6 mm, thickness 1.5 mm and the rim diameter 4.3 mm. Original diameter of the glass: c. 11 cm.

Found when sieving plough soil (soil-sieving trench 2250).



KØM 01699x239

Corpus sherd

Faintly bluish-green, transparent, triangular corpus sherd.

Height: 9.9 mm, width: 5.5 mm, thickness: 0.6 mm. Found when sieving plough soil (soil-sieving trench 2149).



KØM 01699x260

Corpus sherd

Light bluish-green, transparent, square corpus sherd with blisters and two applied threads of the same colour as the glass.

Height: 12.2 mm, width: 5.5 mm, thickness: 0.5 mm. Found when sieving plough soil (soil-sieving trench 2748).



KØM 01699x261

Corpus sherd

Bluish-green, transparent, square corpus sherd with blisters.

Height: 5.0 mm, width: 4.8 mm, thickness: 0.8 mm. Found when sieving plough soil (soil-sieving trench 2947).



KØM 01699x264

Corpus sherd with filigree thread

Olive-green/brown, translucent, triangular corpus sherd with applied 3 mm filigree thread of whitish-yellow and brown glass. The filigree thread has clearly been applied at too high a temperature, so the whitish-yellow encircling threads have fused with the side sherd.

Height: 15.8 mm, width: 12.9 mm, thickness: 1.6 mm. Found when sieving plough soil (soil-sieving trench 2747).



KØM 01699x269

Corpus sherd

Light bluish-green, transparent pentagonal corpus sherd with blisters and thin, applied thread of the same colour as the glass.

Height: 6.9 mm, width: 11.7 mm, thickness: 0.7 mm. Found when sieving plough soil (soil-sieving trench 2247).



KØM 01699x293

Corpus sherd

Light bluish-green, transparent, pentagonal corpus sherd with some blisters and two applied, thin threads of the same colour as the glass.

Height: 17.6 mm, width: 14.9 mm, thickness: 0.4 mm. Found when sieving plough soil (soil-sieving trench 3149).



KØM 01699x294

Corpus sherd

Light-green, transparent, almost triangular corpus sherd.

Height: 15.2 mm, width: 12.9 mm, thickness: 0.5 mm. Found in un-sieved pile of soil.

Table 1 - Glass sherds

Vessel glass from Strøby Tøftegård



KØM 01699x296

Corpus sherd

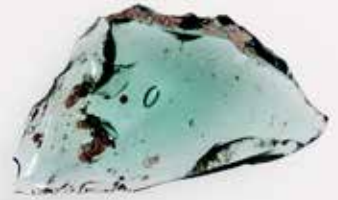
Light-green, transparent, triangular corpus sherd.
Height: 9.0 mm, width: 4.4 mm, thickness: 0.7 mm.
Found when sieving plough soil (soil-sieving trench 3254).



KØM 01699x297

Corpus sherd

Bluish-green, transparent, square corpus sherd.
Height: 5.3 mm, width: 4.6 mm, thickness: 0.3 mm.
Found when sieving plough soil (soil-sieving trench 3256).



KØM 01699x299

Corpus sherd

Light-green, translucent, almost rounded triangular corpus sherd with blister and fused-in thread of the same colour as the glass.
Height: 14.1 mm, width: 8.3 mm, thickness: 0.8 mm.
Found when sieving plough soil (soil-sieving trench 1960).



KØM 01699x300

Corpus sherd

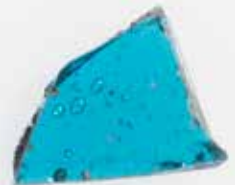
Light bluish-grey, transparent, square corpus sherd with some little blisters.
Height: 8.9 mm, width: 5.5 mm, thickness: 0.6 mm.
Found when sieving plough soil (soil-sieving trench 2260).



KØM 01699x303

Corpus sherd with filigree thread

Olive-green, transparent, hexagonal corpus sherd with a thin, white fused-in thread, and on the upper edge a filigree thread of the same colour as the glass.
Height: 6.9 mm, width 9.9 mm, thickness: 0.8 mm.
Found when sieving plough soil (soil-sieving trench 2260).



KØM 01699x308

Corpus sherd

Dark turquoise, transparent square corpus sherd with blisters.
Height: 4.3 mm, width: 5.7 mm, thickness: 0.6 mm.
Found when sieving plough soil (soil-sieving trench 3252).



KØM 01699x309

Corpus sherd with filigree thread

Olive-green/brown, triangular corpus sherd with applied filigree thread whitish-yellow and brown glass. The filigree thread has clearly been applied at too high a temperature, so that the whitish-yellow encircling threads have fused with the side sherd.
Height: 17.5 mm, width: 6.8 mm, thickness: 1.0 mm.
Found when sieving plough soil (soil-sieving trench 2059).



KØM 01699x312

Corpus sherd

Light bluish-green, transparent, hexagonal corpus sherd.
Height 5.0 mm, width: 4.6 mm, thickness: 0.7 mm.
Stray find.



KØM 01699x313

Corpus sherd

Olive-green/brown, transparent, pentagonal, curved corpus sherd of varying thickness.
Height: 15.5 mm, width: 14.1 mm, thickness: 2.0 mm.
Found when sieving plough soil (soil-sieving trench 3251).

Table 1 - Glass sherds

Vessel glass from Strøby Tøftegård



KØM 01699x314

Corpus sherd

Light bluish-green, transparent, pentagonal corpus sherd with some blisters.

Height: 10.3 mm, width: 7.0 mm, thickness: 0.6 mm.

Found when sieving plough soil (soil-sieving trench 2059).



KØM 01699x317

Corpus sherd

Olive-green/brown, translucent, much chipped and curved square corpus sherd with applied, faceted thread of the same colour as the glass.

Height: 10.4 mm, width: 9.2 mm, thickness: 1.4 mm.

Found when sieving plough soil (soil-sieving trench 2259).



KØM 01699x323

Corpus sherd

Bluish-green, transparent, triangular corpus sherd with blisters.

Height: 8.9 mm, width: 3.5 mm, thickness: 0.8 mm.

Found when sieving plough soil (soil-sieving trench 2260).



KØM 01699x326

Clear, transparent, curved crescent-shaped corpus sherd with fine blisters.

Height: 10.8, width: 19.1 mm, thickness: 0.8 mm.

Found when sieving a pit, A10004.



KØM 01699x334

Rim sherd

Clear, transparent, square rim sherd with blisters and with a thickened, rounded inward-turned rim.

Height 10.6 mm, width 16.2 mm. Thickness 1.4 mm

and rim diameter 3.5 mm. Original diameter of the glass: c. 10 cm.

Found when sieving a pit, A10004).



KØM 01699x350

Corpus sherd

Quite faintly bluish-green, transparent, triangular corpus sherd with a few blisters.

Height: 9.5 mm, width: 5.1 mm, thickness: 0.4 mm.

Found when sieving plough soil (soil-sieving trench 3361).



KØM 01699x351

Corpus sherd

Dark, bluish-green, transparent, almost triangular, corpus sherd with blisters.

Height: 9.9 mm, width: 8.4 mm, thickness: 1.6 mm.

Found when sieving plough soil (soil-sieving trench 3360).



KØM 01699x352

Corpus sherd

Light-green, transparent, pentagonal corpus sherd with scratched surface.

Height: 12.4 mm, width: 8.5 mm, thickness: 0.7 mm.

Found when sieving plough soil (soil-sieving trench 3361).



KØM 01699x353

Corpus sherd

Bluish-green, transparent, pentagonal corpus sherd with blisters.

Height: 5.2 mm, width: 5.1 mm, thickness: 0.6 mm.

Found when sieving plough soil (soil-sieving trench 2561).

Table 1 - Glass sherds
Vessel glass from Strøby Tøftegård



KØM 01699x359

Corpus sherd

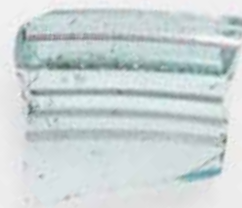
Olive-green/brown, transparent, triangular, corpus sherd with yellow circular, opaque circle decoration. Height: 13.5 mm, width: 12.4 mm, thickness: 12.2 mm. Found when sieving fill from A10059, on the northern side of House 3.



KØM 01699x371

Corpus sherd

Bluish-green, transparent triangular corpus sherd with blisters. Height: 9.4 mm, width: 5.5 mm, thickness: 0.5 mm. Stray find, found in pile of soil between a soil-sieving trench and an empty area.



KØM 01699x372

Rim sherd

Faintly bluish-green, transparent, square, everted rim sherd with a few blisters, and a folded, doubled, rounded and inward-turned thickened rim. On the thickened rim are two fused-in white and below the rim three fused-in white threads. Height 14.0 mm, width 15.6 mm, thickness 1.9 mm and rim diameter 4.7 mm. Original diameter of the glass: c.11.5 cm. Found when sieving a pit, A10251.



KØM 01699x373

Corpus sherd

Faintly bluish-green, transparent, square corpus sherd with blister. Height: 9.7 mm, width: 4.7 mm, thickness: 1.0 mm. Found when sieving plough soil (soil-sieving trench 3458).



KØM 01699x374

Corpus sherd

Light-green, transparent, square corpus sherd with faint traces of two light, white threads fused into the glass. Height: 3.7 mm, width: 5.3 mm, thickness: 0.3 mm. Found when sieving a pit, A10192.



KØM 01699x375

Base sherd from a claw beaker.

Dark green, transparent, base of claw beaker into which a thread of reddish-brown glass has been fused on the two claws. The base consists of a much-thickened, round, raised base-ring, on which the lower part of the glass vessel is preserved as a 16.5 mm high and 1.2 mm thick, triangular side corpus sherd. Diameter of the base-ring: 38 mm, thickness: 10 mm. Greatest height of the glass: 28 mm. Stray find, found in a pile of soil between a soil-sieving trench and an empty area in House 5.



KØM 01699x381

Rim sherd

Olive-green/brown, transparent, square rim sherd with a few, small blisters. The rim is slightly everted and has thickened profiles on both sides of the rim. Height 20.7 mm, width 24.7 mm, thickness 1.1 mm and rim diameter 3.8 mm. Original diameter of the glass: 9.7 cm. Found when sieving a pit, A10289.



KØM 01699x383

Corpus sherd

Bluish-green, transparent, triangular corpus sherd with blisters and two applied threads of the same colour as the glass, one of which is very thin. Height: 11.3 mm, width: 6.9 mm, thickness: 1.3 mm. Found in wall ditch of House 4, A10747.



KØM 01699x384

Corpus sherd

Bluish-green, transparent, pentagonal corpus sherd with blisters and an applied thread. Height: 16.7 mm, width: 17.8 mm, thickness: 0.6 mm. Found when sieving a pit, A10292.

Table 1 - Glass sherds
Vessel glass from Strøby Tøftegård



KØM 01699x385

Rim sherd

Light-green, transparent, triangular rim sherd with a few blisters and slightly thickened, rounded rim.

Height 10.5 mm, width 8.8 mm, thickness 1.4 mm and rim diameter 2.0 mm. Original diameter of the glass: c. 8 cm.

Found when sieving a pit, A10292.



KØM 01699x386

Corpus sherd

Green, transparent, pentagonal corpus sherd with blisters.

Height: 13.6 mm, width: 11.1 mm, thickness: 0.4 mm.

Found when sieving a pit, A10292.



KØM 01699x387

Corpus sherd

Bluish-green, transparent, square corpus sherd with blisters and thin, applied thread.

Height: 6.2 mm, width: 8.7 mm, thickness: 0.4 mm.

Found when sieving a pit, A10292.



KØM 01699x388

Corpus sherd

Bluish-green, transparent, triangular corpus sherd with blisters.

Height: 8.2 mm, width: 6.0 mm, thickness: 0.5 mm.

Found when sieving a pit, A10292.



KØM 01699x389

Corpus sherd

Clear, transparent, triangular corpus sherd with blisters.

Height: 10.8 mm, width: 7.6 mm, thickness: 0.6 mm.

Found when sieving a pit, A10282.



KØM 01699x390

Corpus sherd

Bluish-green, transparent, triangular corpus sherd with blisters.

Height: 6.3 mm, width: 4.6 mm, thickness: 0.4 mm.

Found when sieving plough soil (soil-sieving trench 3454).



KØM 01699x391

Corpus sherd

Olive-green, transparent, triangular corpus sherd.

Height: 14.6 mm, width: 8.7 mm, thickness: 0.3 mm.

Found when sieving a pit, A10289.



KØM 01699x401

Corpus sherd

Olive-green, transparent, square corpus sherd.

Height: 7.2 mm, width: 8.8 mm, thickness: 0.7 mm.

Found when sieving a pit, A10289.



KØM 01699x410

Corpus sherd

Light bluish-green, transparent, square corpus sherd with blisters and two applied threads of the same colour as the glass. One thread is very thin and has a fine, reddish-brown thread fused into it.

Height: 23.2 mm, width: 15.3 mm, thickness: 1.0 mm.

Found when sieving a pit, A10458.

Table 1 - Glass sherds
Vessel glass from Strøby Tøftegård



KØM 01699x414

Corpus sherd

Bluish-green, transparent, triangular corpus sherd with some blisters.

Height: 7.8 mm, width: 7.1 mm, thickness: 0.7 mm.

Found when sieving a pit, A10334.



KØM 01699x415

Corpus sherd

Bluish-green, transparent, square corpus sherd with blisters.

Height: 5.2 mm, width: 8.6 mm, thickness: 0.7 mm.

Found when sieving a pit, A10289.



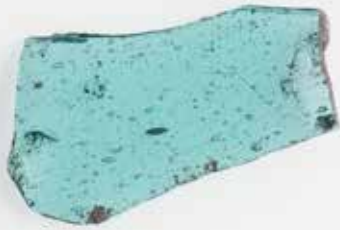
KØM 01699x417

Corpus sherd

Light bluish-green, transparent, triangular corpus sherd with blisters.

Height: 21.3 mm, width: 8.6 mm, thickness: 0.8 mm.

Found when sieving a pit, A10317.



KØM 01699x418

Corpus sherd

Bluish-green, transparent, almost square corpus sherd with clear blisters.

Height: 21.8 mm, width: 12.5 mm, thickness: 0.7 mm.

Found when sieving a pit, A10458.



KØM 01699x420

Corpus sherd

Bluish-green, transparent, pentagonal corpus sherd with blisters.

Height: 10.1 mm, width: 9.5 mm, thickness: 0.6 mm.

Found when sieving a pit, A10442.



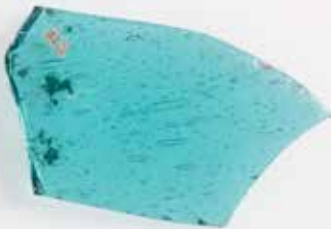
KØM 01699x421

Corpus sherd

Bluish-green, transparent, almost pentagonal corpus sherd with blisters.

Height: 9.1 mm, width: 4.4 mm, thickness: 0.4 mm.

Found in fill from A10470.



KØM 01699x426

Corpus sherd

Bluish-green, transparent, pentagonal corpus sherd with large, oval blisters.

Height: 12.0 mm, width: 20.8 mm, thickness: 0.7 mm.

Found when sieving a pit, A10115.



KØM 01699x427

Corpus sherd

Bluish-green, transparent, pentagonal corpus sherd with blisters.

Height: 10.8 mm, width: 20.8 mm, thickness: 1.3 mm.

Found when sieving a pit, A10115.



KØM 01699x428

Corpus sherd

Faintly bluish-green, transparent, rounded square corpus sherd with a few blisters.

Height: 4.9 mm, width: 10.1 mm, thickness: 0.5 mm.

Found when sieving a pit, A10115.

Table 1 - Glass sherds

Vessel glass from Strøby Toftegård



KØM 01699x429

Corpus sherd

Bluish-green, transparent, pentagonal corpus sherd with blisters and applied thread of the same colour as the glass.

Height: 15.3 mm, width: 11.5 mm, thickness: 0.8 mm.

Found when sieving a pit, A10115.



KØM 01699x430

Corpus sherd

Bluish-green, transparent, pentagonal corpus sherd with blisters and applied thread of the same colour as the glass.

Height: 7.2 mm, width: 6.1 mm, thickness: 0.7 mm.

Found when sieving a pit, A10115.



KØM 01699x431

Corpus sherd

Bluish-green, transparent, square corpus sherd with blisters.

Height: 118 mm, width: 9.9 mm, thickness: 0.6 mm.

Found when sieving a pit, A10115.



Dette foto mangler



KØM 01699x432

Corpus sherd

Bluish-green, transparent, hexagonal corpus sherd with blisters.

Height: 9.8 mm, width: 10.7 mm, thickness: 0.6 mm.

Found when sieving a pit, A10115.

KØM 01699x434

Corpus sherd

Light bluish-green, hexagonal corpus sherd with blisters.

Height: 14.6 mm, width: 16.6 mm, thickness: 1.5 mm.

Found in a posthole from House 2, A10397.

KØM 01699x447

Corpus sherd

Light-green, transparent, pentagonal corpus sherd with little blisters.

Height: 14.6 mm, width: 16.6 mm, thickness: 1.5 mm.

Stray find.



KØM 01699x453

Corpus sherd

Bluish-green, transparent, square corpus sherd with blisters and applied thread, which has a thin, reddish-brown thread fused into it.

Height: 12.3 mm, width: 14.8 mm, thickness: 0.6 mm.

Found when sieving a pit, A10703.

KØM 01699x471

Corpus sherd

Light-green, transparent, triangular corpus sherd with three yellow, fused-in threads.

Height: 3.5 mm, width: 8.7 mm, thickness: 0.5 mm.

Found in a wall ditch in the eastern gable of House 4, A10747.

KØM 01699x472

Corpus sherd

Faintly light-green, transparent, pentagonal corpus sherd with three yellow, fused-in threads.

Height: 6.8 mm, width: 8.7 mm, thickness: 0.7 mm.

Found in a wall ditch in the eastern gable of House 4, A10747.

Table 1 - Glass sherds
Vessel glass from Strøby Tøftegård



KØM 01699x473

Corpus sherd

Bluish-green, transparent, square corpus sherd with blisters.

Height: 6.3 mm, width: 4.8 mm, thickness: 0.5 mm.

Found when sieving a pit, A10559.



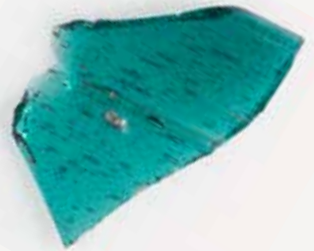
KØM 01699x474

Corpus sherd

Olive-green, transparent, rounded, triangular corpus sherd.

Height: 21.4 mm, width: 11.8 mm, thickness: 0.7 mm.

Found in a posthole (roof-supporting post) in House 4, A10687.



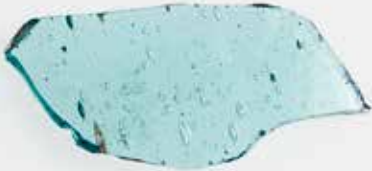
KØM 01699x475

Rim sherd

Bluish-green, transparent, almost pentagonal, slightly everted, thickened rim sherd with blisters and an applied thread of the same colour as the glass.

Height 22.8 mm, width 10.9 mm, thickness 1.9 mm and at the rim 3 mm. Original diameter of the glass: c. 7 cm.

Found when sieving a pit, A10699.



KØM 01699x476

Corpus sherd

Light bluish-green, transparent, almost rounded square corpus sherd with many blisters.

Height: 13.0 mm, width: 5.5 mm, thickness: 0.4 mm.

Found when sieving a pit, A10699.



KØM 01699x477

Corpus sherd

Bluish-green, transparent, pentagonal corpus sherd with some blisters and applied thread of the same colour as the glass, which has a thin, reddish-brown thread fused into it.

Height: 18.0 mm, width: 10.6 mm, thickness: 1.1 mm.

Found when sieving a pit, A10699.



KØM 0169 x 00478

Corpus sherd

Green, transparent, square corpus sherd with a single blister.

Height: 10.7 mm, width: 3.8 mm, thickness: 0.9 mm.

Found in pit, A10559.



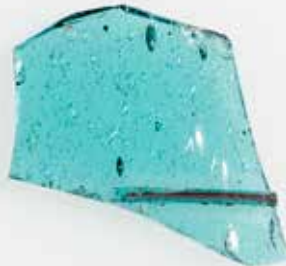
KØM 01699x479

Corpus sherd

Bluish-green, transparent, square corpus sherd with blisters.

Height: 21.0 mm, width: 10.1 mm, thickness: 1.2 mm.

Found in pit, A10699.



KØM 01699x480

Corpus sherd

Bluish-green, transparent, rounded square corpus sherd with blisters and applied thread of the same colour as the glass, on which a thin reddish-brown thread is fused.

Height: 10.7 mm, width: 12.6 mm, thickness: 1.2 mm.

Found in pit, A10699.



KØM 01699x481

Corpus sherd

Light-green, transparent, triangular corpus sherd.

Height: 13.8 mm, width: 11.3 mm, thickness: 1.9 mm.

Stray find from a pile of topsoil.

Table 1 - Glass sherds
Vessel glass from Strøby Tøftegård



KØM 01699x482

Corpus sherd

Clear, transparent, square corpus sherd with scratched surface.

Height: 12.7 mm, width: 10.9 mm, thickness: 0.4 mm.

Stray find from a pile of topsoil.



KØM 01699x483

Corpus sherd

Clear, transparent, square corpus sherd.

Height: 13.1 mm, width: 10.6 mm, thickness: 0.5 mm.

Stray find from a pile of topsoil.



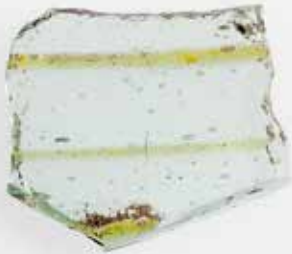
KØM 01699x484

Corpus sherd

Light-green, transparent, square corpus sherd with blisters and five yellow, fused-in threads.

Height: 14.5 mm, width: 10.6 mm, thickness: 0.8 mm.

Stray find from a pile of topsoil.



KØM 01699x485

Corpus sherd

Light bluish-green, transparent, square corpus sherd with a few blisters and three yellow, fused-in threads, spaced with 2.5 mm between them.

Height: 7.9 mm, width: 11.6 mm, thickness: 0.5 mm.

Stray find from a pile of topsoil.



KØM 01699x486

Corpus sherd

Light bluish-green, transparent, triangular corpus sherd with a few little blisters.

Height: 5.0 mm, width: 6.1 mm, thickness: 0.5 mm.

Stray find from a pile of topsoil.



KØM 01699x487

Corpus sherd

Bluish-green, transparent, square corpus sherd with clear blisters and cracks.

Stray find from a pile of topsoil.



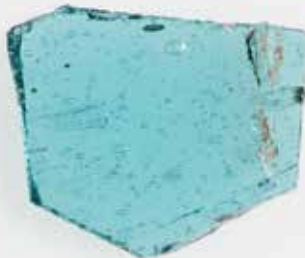
KØM 01699x524

Corpus sherd

Green, transparent, triangular corpus sherd with blisters.

Height: 5.3 mm, width: 13.4 mm, thickness: 1.0 mm.

Found while clearing the wall in the northern side of House 4, A10747.



KØM 01699x525

Corpus sherd

Bluish-green, transparent, triangular corpus sherd with some little and a few bigger blisters and thin applied thread.

Height: 11.0 mm, width: 10.8 mm thickness: 0.6 mm.

Stray find from a pile of soil.



KØM 01699x526

Corpus sherd

Olive-green, translucent, square corpus sherd with ruffled inside.

Height: 8.0 mm, width: 21.4 mm thickness: 3.0 mm.

Stray find (possibly modern bottle sherd).

Table 1 - Glass sherds

Vessel glass from Strøby Tøftegård



KØM 01699x562

Rim sherd

Three fragments and a micro sherd from a bluish-green rim sherd with slightly thickened rim, with smaller blisters and three thin, applied threads of the same colour as the glass. Height 19.0 mm, total width 27.4 mm, thickness 2.0 mm and at the rim 3.6 mm. Original diameter of the glass: c. 11 cm. Stray find.



KØM 01699x650

Corpus sherd

Bluish-green, translucent, almost rounded, triangular, thick-walled corpus sherd with applied curved lump of glass. Height: 15.6 mm, width: 13.6 mm, thickness: 5.4 mm. Found in a cultural layer in soil-sieving trench F5.



KØM 01699x688

Corpus sherd

Bluish-green, transparent, pentagonal corpus sherd. Height: 9.7 mm, width: 14.2 mm, thickness: 0.7 mm. Found in a pit, A10783.



KØM 01699x693

Corpus sherd

Green, transparent, hexagonal corpus sherd. Height: 6.4 mm, width: 5.8 mm, thickness: 0.7 mm. Found in soil-sieving trench XIV.



KØM 01699x695

Corpus sherd

Bluish-green, transparent square corpus sherd slightly everted with fused-in reddish-brown thread. Height: 9.7 mm, width: 6.6 mm, thickness: 1.3 mm. Found in soil-sieving trench XVIII.



KØM 01699x705

Corpus sherd

Greyish, faintly green, transparent, square corpus sherd. Found in soil-sieving trench 1.



KØM 01699x728

Corpus sherd

Greyish, faintly green, translucent, almost pentagonal corpus sherd. Height: 7.2 mm, width: 3.4 mm, thickness: 1.2 mm. Found in soil-sieving trench 1.

Dette foto mangler



KØM 01699x746

Missing

Greenish glass fragment. Found in soil-sieving trench XV.

KØM 01699x931

Corpus sherd

Faintly light-green, transparent, pentagonal corpus sherd with six applied, thin threads of the same colour as the glass. Height: 12.2 mm, width: 10.3 mm, thickness: 1.3 mm. Found in a pit, A13155.

Table 1 - Glass sherds
Vessel glass from Strøby Tøftegård



KØM 01699x1002

Rim sherd

Light-green, transparent, square rim sherd with slightly thickened rim.

Height 16.5 mm, thickness 1.6 mm and 2.0 mm at the rim. Original diameter of the glass: c. 3.5 cm.

Stray find from an evened-out layer of topsoil in plan area 25294.



KØM 01699x1068

Corpus sherd

Faintly greenish, transparent, triangular corpus sherd with two thin, applied threads of the same colour as the glass.

Height: 10.2 mm, width: 6.8 mm, thickness: 0.5 mm.

Found in soil-sieving trench B6.



KØM 01699x1069

Corpus sherd

Bluish-green, transparent, pentagonal corpus sherd.

Height: 11.0 mm, width: 7.4 mm, thickness: 0.5 mm.

Found in soil-sieving trench B4.



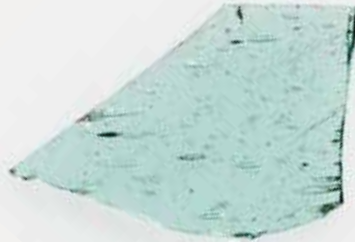
KØM 01699x1070

Corpus sherd

Bluish-green, transparent, square corpus sherd.

Height: 5.7 mm, width: 5.4 mm, thickness: 0.7 mm.

Found in soil-sieving trench B4.



KØM 01699x1071

Corpus sherd

Faintly greyish, light green, transparent, corpus sherd.

Height: 7.9 mm, width: 11.4 mm, thickness: 0.4 mm.

Found in soil-sieving trench C1.



KØM 01699x1075

Corpus sherd

Light-green, transparent, square corpus sherd with three fused-in yellow glass threads.

Height: 7.5 mm, width: 13.4 mm, thickness: 0.5 mm.

Found in soil-sieving trench A2.



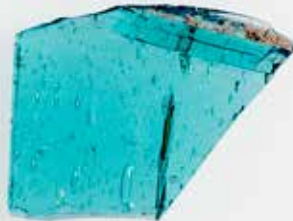
KØM 01699x1076

Corpus sherd

Olive-green, transparent, square corpus sherd.

Height: 19.8 mm, width: 9.6 mm, thickness: 0.7 mm.

Found in soil-sieving trench A2.



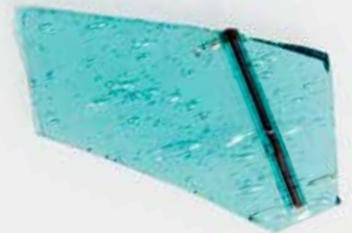
KØM 01699x1079

Corpus sherd

Bluish-green, transparent, pentagonal corpus sherd with applied thread of the same colour as the glass.

Height: 5.5 mm, width: 7.3 mm, thickness: 0.7 mm.

Found in a pit, A30165.



KØM 01699x1080

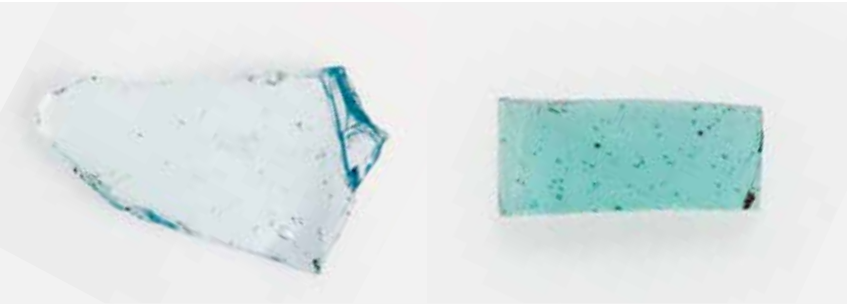
Corpus sherd

Bluish-green, transparent, pentagonal corpus sherd with applied thread of the same colour as the glass, into which is fused a thin, reddish-brown thread.

Height: 10.6 mm, width: 6.4 mm, thickness: 0.7 mm.

Found in a pit, A30165.

Table 1 - Glass sherds
Vessel glass from Strøby Toftegård



KØM 01699x1081

Corpus sherd

Clear, faintly bluish-green, square corpus sherd.

Height: 21.0 mm, width: 10.3 mm, thickness: 1.3 mm.

Found in soil-sieving trench C1.

KØM 01699 x 1248

Corpus sherd

Bluish-green, square corpus sherd with little blisters.

Height: 8.8 mm, width: 3.6 mm, thickness: 0.8 mm.

Found in soil-sieving trench B8, area 1.